

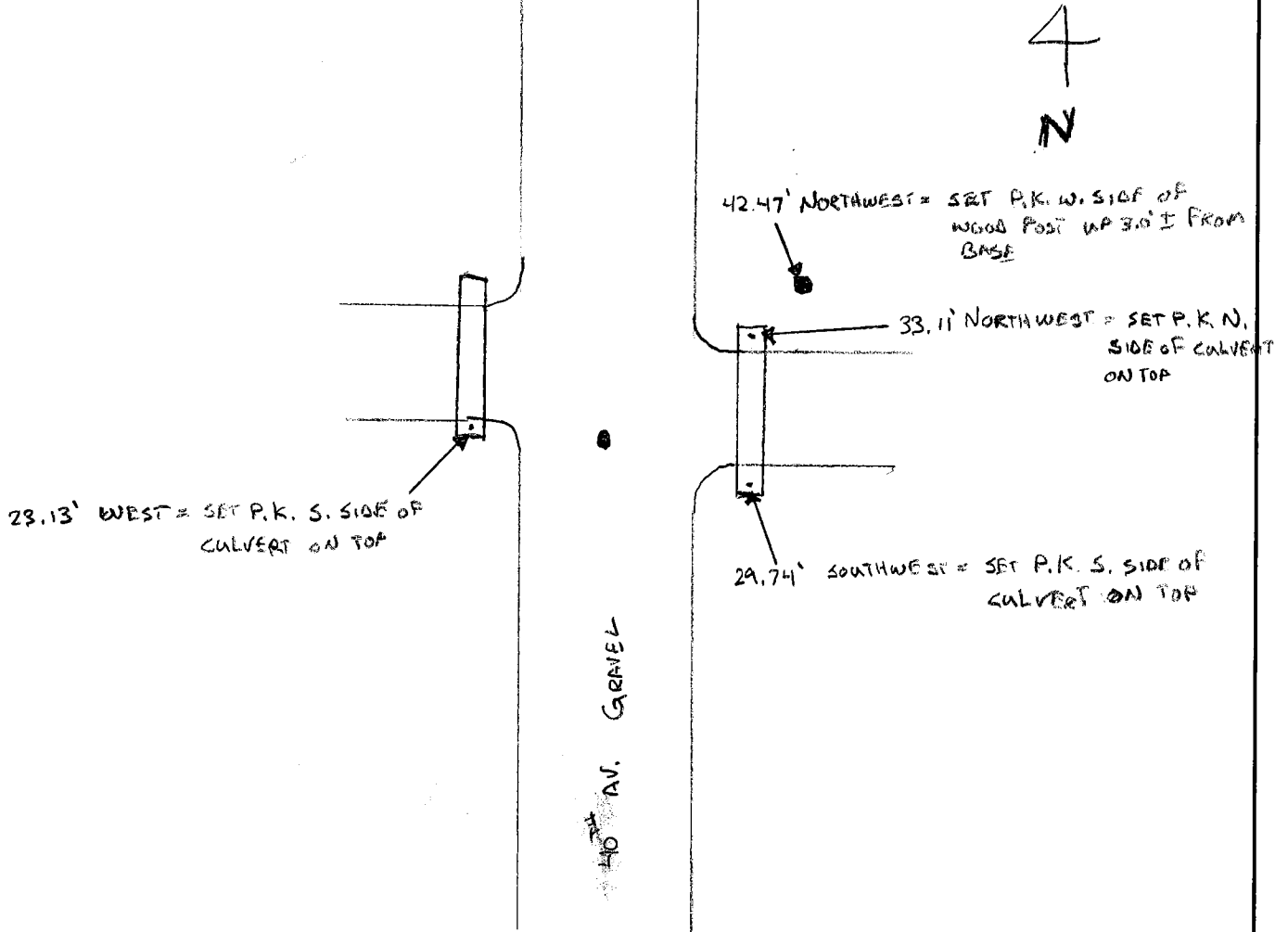
# CERTIFICATE OF LOCATION OF GOVERNMENT CORNER

EAST QUARTER Corner of Section 34, Township 108 N, Range 43 W, 5<sup>th</sup> P.M.  
STATE OF MINNESOTA, County of MURRAY

At the corner location shown on the sketch:

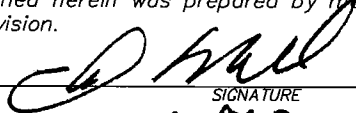
- On 7/25/07 found a 8"X8" STONE WITH 1X3" LATH UNDER STONE DOWN  
1.5' BELOW SURFACE  
 left monument as found,  lowered monument,  removed monument (explain)
- On 7/26/07 placed a 3/8 CAPPED REBAR # 40583 DOWN 0.4' BELOW SURFACE

SKETCH OF REFERENCE TIES



Statement of evidence relative to this corner location is on back of page.

I hereby certify that this document and the data contained herein was prepared by me or under my direct supervision.

  
SIGNATURE

Registration No. 40853

- Land Surveyor,  Professional Engineer
- County Surveyor,  County Engineer

OFFICE OF THE COUNTY RECORDER  
County of \_\_\_\_\_

I hereby certify that this document was filed in the Co. Recorder's office at \_\_\_\_\_ .M. on the \_\_\_\_\_ day of \_\_\_\_\_ A.D., 20\_\_\_\_

County Recorder \_\_\_\_\_

By \_\_\_\_\_, Deputy

DOCUMENT NO. \_\_\_\_\_